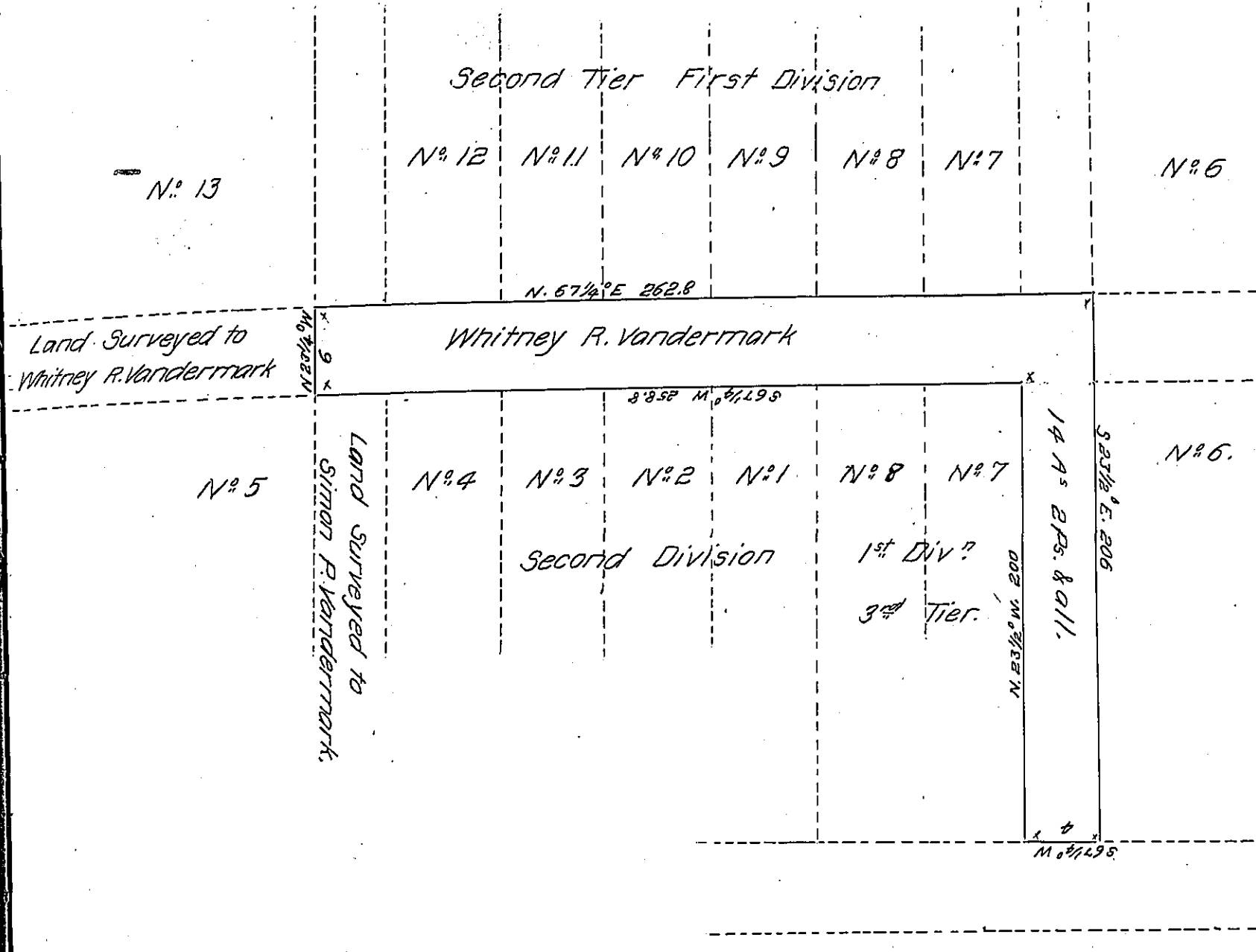


FORM NO. 1.



A draft of a tract of land (improved) Situate in the first division of Newport one of the seventeen certified townships in Luzerne County. - Joining lands surveyed to Whitney R. Vandermark and others. - Containing fourteen acres two perches and allowance of six per cent for roads &c. Surveyed the above land to Whitney R. Vandermark January 5<sup>th</sup> 1857 By virtue of his warrant dated December 10<sup>th</sup> 1856.

To John Rowe Esqr. Henry Colt  
 Surv. Genl. County Surveyor.

IN TESTIMONY that the above is a copy of the original remaining on file in the Department of Internal Affairs of Pennsylvania, made conformably to an Act of Assembly approved the 16th day of February 1833, I have hereunto set my hand and caused the Seal of said Department to be affixed at Harrisburg, this Twenty-fourth day of April 1907

*Isaac R. Buss*  
 Secretary of Internal Affairs